

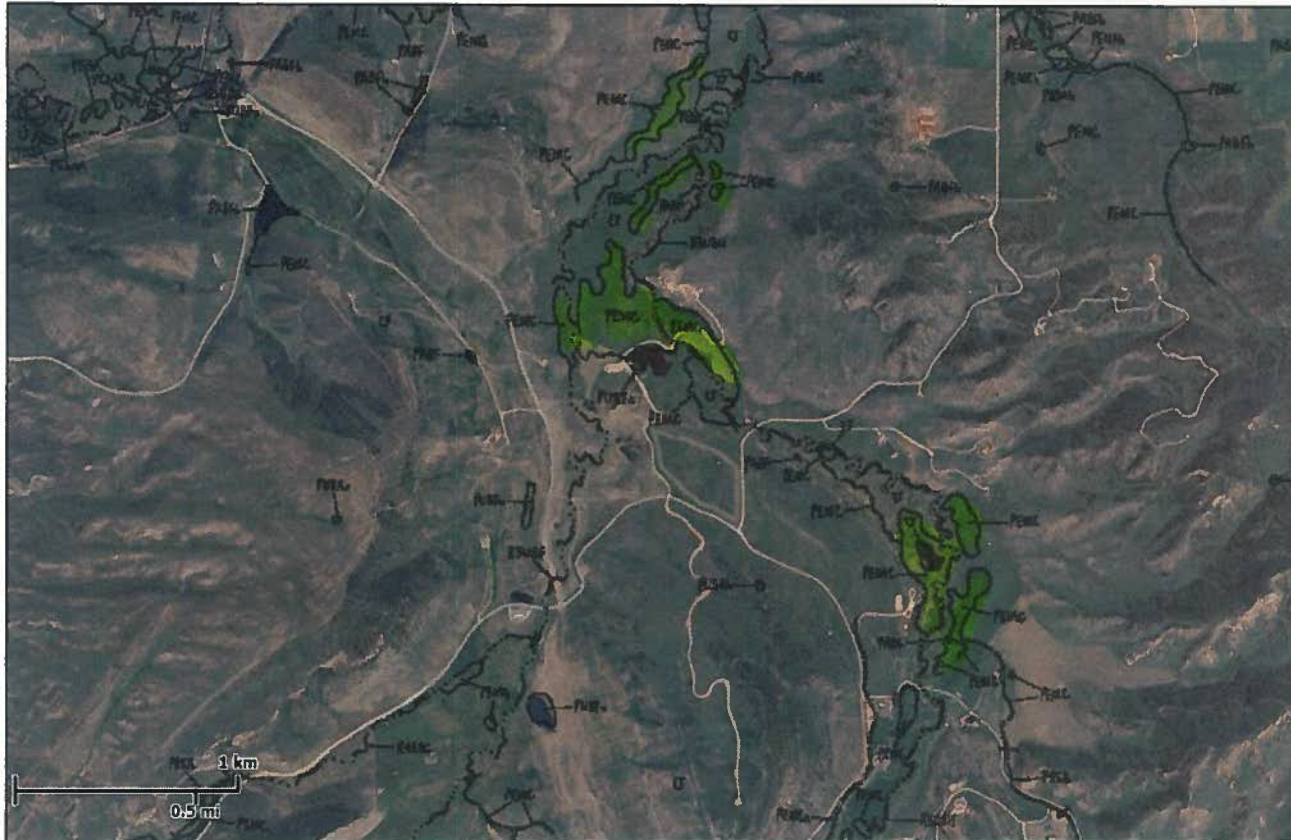


U.S. Fish and Wildlife Service

National Wetlands Inventory

Trout Creek 1 - south

May 3, 2012



Wetlands

- Freshwater Emergent
- Freshwater Forested/Shrub
- Estuarine and Marine Deepwater
- Estuarine and Marine
- Freshwater Pond
- Lake
- Riverine
- Other

Riparian

- Herbaceous
- Forested/Shrub

This map is for general reference only. The US Fish and Wildlife Service is not responsible for the accuracy or currentness of the base data shown on this map. All wetlands related data should be used in accordance with the layer metadata found on the Wetlands Mapper web site.

User Remarks:

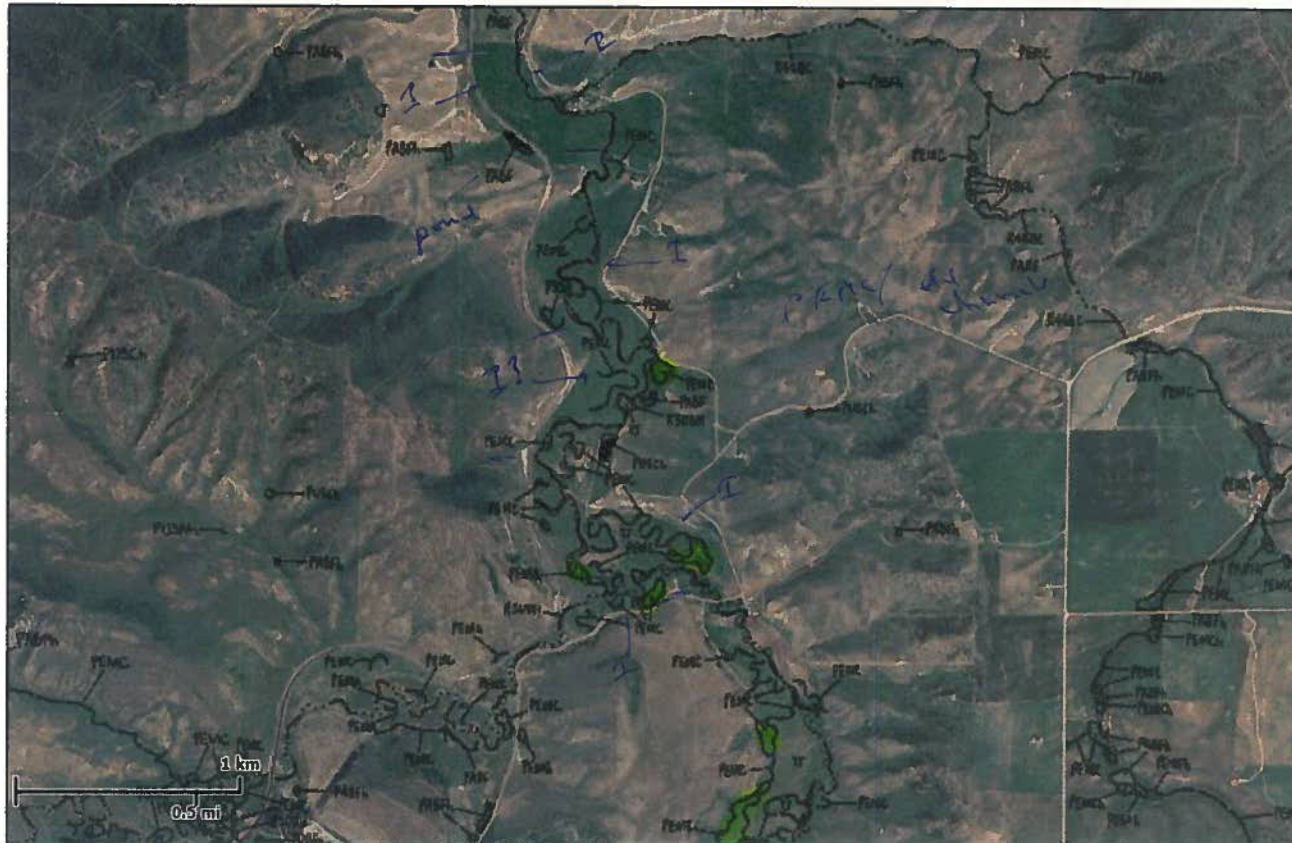


U.S. Fish and Wildlife Service

National Wetlands Inventory

Trout Creek 2

May 3, 2012



Wetlands

- Freshwater Emergent
- Freshwater Forested/Shrub
- Estuarine and Marine Deepwater
- Estuarine and Marine
- Freshwater Pond
- Lake
- Riverine
- Other

Riparian

- Herbaceous
- Forested/Shrub

This map is for general reference only. The US Fish and Wildlife Service is not responsible for the accuracy or currentness of the base data shown on this map. All wetlands related data should be used in accordance with the layer metadata found on the Wetlands Mapper web site.

User Remarks:



U.S. Fish and Wildlife Service

National Wetlands Inventory

Trout Creek 3 - north

May 3, 2012



Wetlands

-  Freshwater Emergent
-  Freshwater Forested/Shrub
-  Estuarine and Marine Deepwater
-  Estuarine and Marine
-  Freshwater Pond
-  Lake
-  Riverine
-  Other

Riparian

-  Herbaceous
-  Forested/Shrub

This map is for general reference only. The US Fish and Wildlife Service is not responsible for the accuracy or currentness of the base data shown on this map. All wetlands related data should be used in accordance with the layer metadata found on the Wetlands Mapper web site.

User Remarks: